

Mapping of Urban Tanks / Rivers and it's Changes SPS Nellore Urban Local Body, SPS Nellore District, Andhra Pradesh

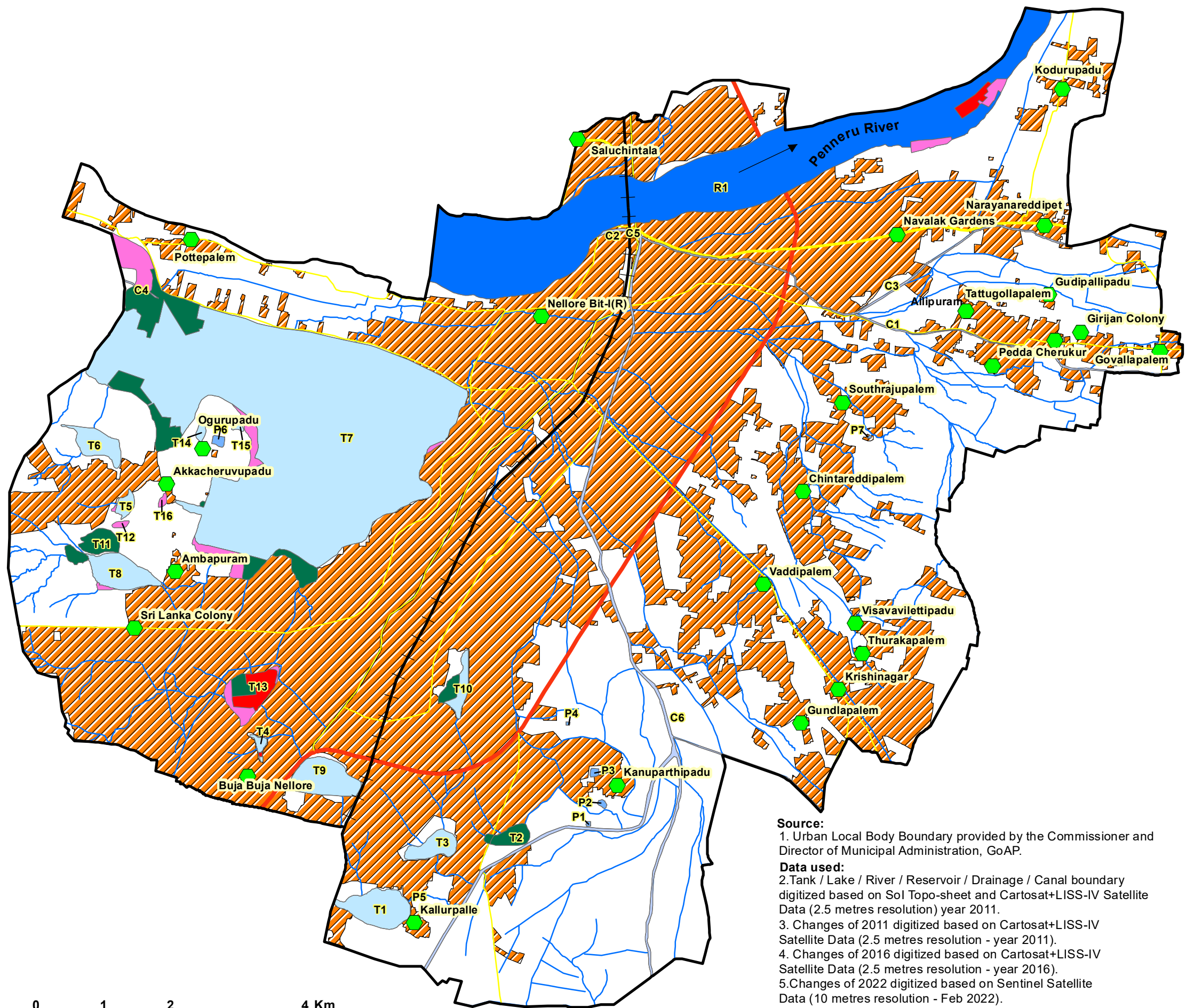


14°28'0"N

14°28'0"N

14°24'0"N

14°24'0"N



Legend

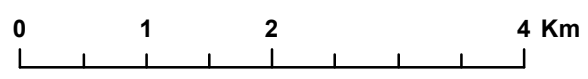
- Habitation
- Drainage
- National Highway
- State Highway
- District Road
- +— Railway line
- Urban Local Body
- Settlement
- C1 Canal
- P1 Pond
- R1 River
- T1 Tank
- 2011 Change
- 2016 Change
- 2022 Change

Sl.No.	Waterbody Name (Refer Map)	Total Waterbody	2011 Changes	2016 Changes	2022 Changes	Remaining Waterbody
Area in Acre(s) (AC)						
1	Canal (C1)	23.03	0.00	0.00	0.00	23.03
2	Canal (C2)	3.94	0.00	0.00	0.00	3.94
3	Canal (C3)	25.36	0.00	0.00	0.00	25.36
4	Canal (C4)	2.87	0.00	0.00	0.00	2.87
5	Canal (C5)	0.72	0.00	0.00	0.00	0.72
6	Canal (C6)	184.83	0.00	0.00	0.00	184.83
7	Pond (P1)	1.14	0.00	0.00	0.00	1.14
8	Pond (P2)	2.81	0.00	0.00	0.00	2.81
9	Pond (P3)	3.52	0.00	0.00	0.00	3.52
10	Pond (P4)	0.67	0.00	0.00	0.00	0.67
11	Pond (P5)	0.39	0.00	0.00	0.00	0.39
12	Pond (P6)	6.17	0.00	0.00	0.00	6.17
13	Pond (P7)	0.54	0.00	0.00	0.00	0.54
14	River (R1)	1881.44	35.46	0.00	23.58	1822.41
15	Tank (T1)	109.03	0.00	0.00	0.00	109.03
16	Tank (T2)	36.38	0.00	36.38	0.00	0.00
17	Tank (T3)	52.49	0.00	0.00	0.00	52.49
18	Tank (T4)	9.94	0.00	0.00	0.87	9.07
19	Tank (T5)	18.71	0.98	0.00	0.00	17.73
20	Tank (T6)	61.76	0.00	0.00	0.00	61.76
21	Tank (T7)	3278.99	128.52	253.25	0.00	2897.22
22	Tank (T8)	114.32	3.57	15.01	0.00	95.74
23	Tank (T9)	111.69	0.00	0.00	0.00	111.69
24	Tank (T10)	51.19	0.00	18.36	0.00	32.83
25	Tank (T11)	41.79	0.00	41.79	0.00	0.00
26	Tank (T12)	4.87	4.87	0.00	0.00	0.00
27	Tank (T13)	99.46	26.05	21.05	52.36	0.00
28	Tank (T14)	8.15	0.00	0.00	0.00	8.15
29	Tank (T15)	4.02	0.00	0.00	0.00	4.02
30	Tank (T16)	4.20	4.20	0.00	0.00	0.00
	Grand Total	6144.40	203.65	385.83	76.80	5478.12

Source:
1. Urban Local Body Boundary provided by the Commissioner and Director of Municipal Administration, GoAP.

Data used:
2. Tank / Lake / River / Reservoir / Drainage / Canal boundary digitized based on SoI Topo-sheet and Cartosat+LISS-IV Satellite Data (2.5 metres resolution) year 2011.
3. Changes of 2011 digitized based on Cartosat+LISS-IV Satellite Data (2.5 metres resolution - year 2011).
4. Changes of 2016 digitized based on Cartosat+LISS-IV Satellite Data (2.5 metres resolution - year 2016).
5. Changes of 2022 digitized based on Sentinel Satellite Data (10 metres resolution - Feb 2022).

Note: This map and contents required to be ground-truth and vetted by the Collector and District Magistrate, SPS Nellore District and the Departments.



Prepared By



Andhra Pradesh Space Applications Centre
ITE& C Department, Govt., of A.P.
Vijayawada - 520010